

# OAKDALE NEWS

**Spring/Summer 2026**



Welcome to the latest edition of the Oakdale Residential Home newsletter! As the summer approaches we are excited to bring you all the latest news and updates from our home. Inside, you will find a glimpse of the joy we shared over the last few months, along with snapshots of those cherished moments. We have included important reminders and details about upcoming events to keep everyone informed and engaged. At Oakdale, we believe in creating a home where each resident is treated like family, and we hope this newsletter brings you closer to the heart of our home.



# CONTENTS & CONTACTS

- 2. Contents
- 3. Message from management
- 4. Notices, Info & Reminders
- 5. Home Support
- 6. Upcoming Events
- 7-9. Activities/Celebrations/Home
- 10. Staff News
- 11. Residents Meetings
- 12. Birthdays
- 13. Feedback

Operations Manager  
Melanie Tucknott  
manager.oakdale@abodecarehomes.co.uk  
01702 553734

Home Manager  
Silvia Gurgu  
oakdale@abodecarehomes.co.uk  
01702 553734

Deputy Manager  
Beverley Shields  
staff.oakdale@abodecarehomes.co.uk  
01702 553734

Senior Administrator  
Tracy Sycamore  
oakdale@abodecarehomes.co.uk  
01702 553734

" " " "

**SOMETIMES IT TAKES ONLY  
ONE ACT OF KINDNESS AND  
CARING TO CHANGE A  
PERSON'S LIFE.**

- JACKIE CHAN

*Our Family*

Our family is like a patchwork quilt  
With kindness gently sewn  
Each piece an original  
With beauty all its own  
With threads of warmth and happiness  
Its lightly stitched together  
To last in love throughout the years  
Our family is forever.  
(Author: unknown)

# MESSAGE FROM MANAGEMENT

---

Today, I would like to recognize and thank our families. Your love and dedication to your relatives inspire us every day. Thank you for working alongside us, for sharing stories, for your patience, and for the confidence you place in our care. It is a privilege to support your loved ones, and we are truly thankful to be part of your extended family.

This year is very special to Oakdale as we prepare to celebrate our 25<sup>th</sup> Anniversary.

We are delighted with how well our homes refurbishment is going and cannot wait for it to all be completed.

We are now in full planning mode getting ready for the summer, booking trips out and planning our annual summer bbq.

We are always striving to excel ourselves and continue to be the best that we can be by providing the highest quality care for all our residents and visitors.



## IMPORTANT NOTICES, INFORMATION AND REMINDERS

### Appointments

When your loved one has a medical appointment please try to arrange for a relative to accompany them.

We are unable to send a staff member with them that is on shift that day so we have to try to arrange a staff member to come in specifically to accompany them to the appointment.



If you are unable to attend and require a staff member to accompany this will now have a charge of £16.00 per hour.

### Pocket Money Bank Details

Cash always preferred

Oakdale Care Home Ltd

HSBC

Acc: 42632241

Sort: 40-06-21



### Toiletries

Please supply and top up your loved ones personal toiletries.

Please ensure that have at least 2 large for 4 small shower gels per month.

Please remember to keep your loved ones pocket money topped up to cover, hairdressing, chiropody, personal shopping, outings etc



## HOME SUPPORT

Just a reminder that we bring into our home many outside services that your loved ones may require, you are always more than welcome to contact us to discuss services you may need or any worries that you may have.

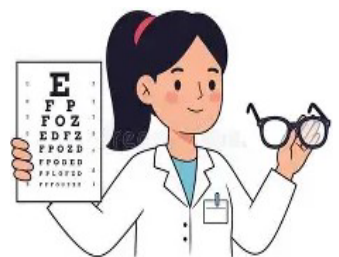
The Benfleet Surgery / Benfleet Primary Care Network (PCN) visit us weekly for a GP/Matrons ward round, they are always available at other times if we request.



As a home we are in contact with our local Dementia Nurse Team and also our visiting District Nurses, in particular those that deal with nutrition, swallow & oral health.



We also have a Dentist and an Optician that visit our home as required.



First 4 Feet (Hadleigh) our chiropodist they visit us every 6-8 weeks.



Tina is our hairdresser joins us every Tuesday.

# UPCOMING EVENTS

---

## Regular Activities:

Exercises with Ben - every other Tuesday

First-4-feet monthly Chiropody services – 6-8 weekly

Hairdresser Tina - every Tuesday

## Trips/Events/Activities:

3<sup>rd</sup> June – Trip Out – Fish & Chips in Rayleigh

10<sup>th</sup> June – Singer - Josh

8<sup>th</sup> July – Trip Out – Morley’s Garden Centre – Wakering

21<sup>st</sup> July – Singer – The Quiet Man

5<sup>th</sup> August – Trip Out – Rossi’s Ice Cream Southend Seafront

9<sup>th</sup> September – Trip Out – Sara’s Tea Room Leigh – Cream Tea

14<sup>th</sup> October – Oakdale Cheese & Wine Evening

18<sup>th</sup> December – Oakdale Christmas Party



# REFURBISHMENT

---

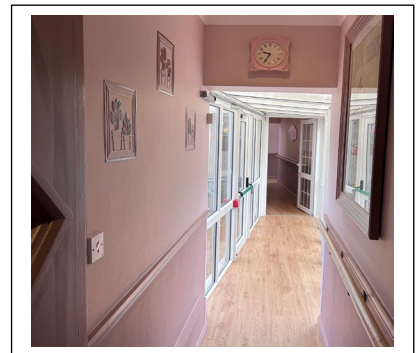
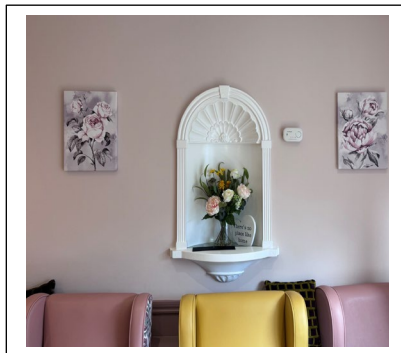
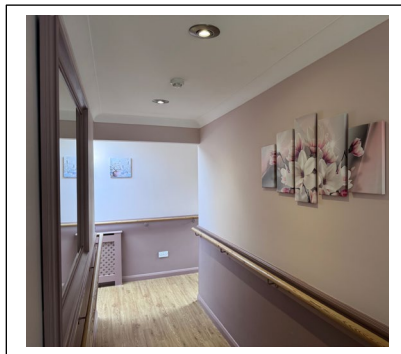
As you may have seen Oakdale is currently having a refurbishment.

We have new armchairs throughout the home and have replaced every light fitting.

All communal areas are to be redecorated.

We are all very pleased with how it is looking.

The downstairs was finished at the end of May. Work on the upstairs will begin at the start of June.



# ANNUAL SUMMER BBQ

## 15<sup>th</sup> August 2026

---

We would like to invite everyone to attend this years extra special annual Summer BBQ as this year Oakdale is 25!.

This is the highlight of our year and chance for families, friends and staff to come together and have some fun.

As usual Melanie's husband Dale will be manning the BBQ.  
All beverages will be provided.

We will have some special visitors, surprises, stall and games as well as an amazing raffle.

Entertainment will be provided by the fabulous singer Hollie-Blue, returning to perform for us for the second year running.

### More details to follow



# ACTIVITIES



## Trip to Rayleigh

3<sup>rd</sup> June 2026

Fish and Chips  
& Ice Cream



# STAFF NEWS

---

**Good luck to our Manager Silvia  
and Carer Amandeep with their upcoming  
final NVQ Exams.**

**Welcome Back to carer Lovejeet  
who returns from her Maternity Leave in June.**



---

## Retirement!

**In April we said goodbye to our Maintenance Man Keith  
Happy retirement Keith we will all miss you.**



# RESIDENTS MEETINGS

---

Family and Friends are always welcome at our Resident's meetings.

We receive valuable feedback and input from those that attend, which help us continue to improve our community.

Please let us know if you would like anything to be discussed at future meetings we will hold.

Your support and engagement mean so much to us, and we look forward to many more fruitful meetings in the future.

Next Residents Meeting: TBC



# BIRTHDAYS & CELEBRATIONS

## Residents

## Staff

### June:

9<sup>th</sup> Shirley

14<sup>th</sup> Carole

### July:

### August:

### June:

11<sup>th</sup> Amber

29<sup>th</sup> Tracy

### July:

1<sup>st</sup> Beverley

4<sup>th</sup> Maria

13<sup>th</sup> Angel

24<sup>th</sup> Jenna

### August:

7<sup>th</sup> Lovejeet

10<sup>th</sup> Charlie

16<sup>th</sup> Claire

16<sup>th</sup> Rachel

23<sup>rd</sup> Kranthi

30<sup>th</sup> Anjali

# FEEDBACK & REVIEWS

---

At Oakdale, your feedback is invaluable to us. Whether you are a resident, family member, or friend, we deeply appreciate hearing about your experiences with our services and care. Your insights help us to continuously improve and ensure that we are meeting the needs of everyone in our community. We encourage you to share your thoughts, suggestions, and any concerns you may have. By doing so, you are helping us create an even better environment where our residents feel supported, cherished, and truly at home. Thank you for taking the time to contribute to our growth and reflection.

---

If you have a spare 5 minutes, we would be incredibly grateful if you could kindly leave a review on your experience with us at Oakdale by scanning the QR code, following the link listed below or posting a review card. You can add a new review every year if it has been longer than that since your last one please add another.



<https://www.carehome.co.uk/review-submit/5483>